



# ANNAVISION

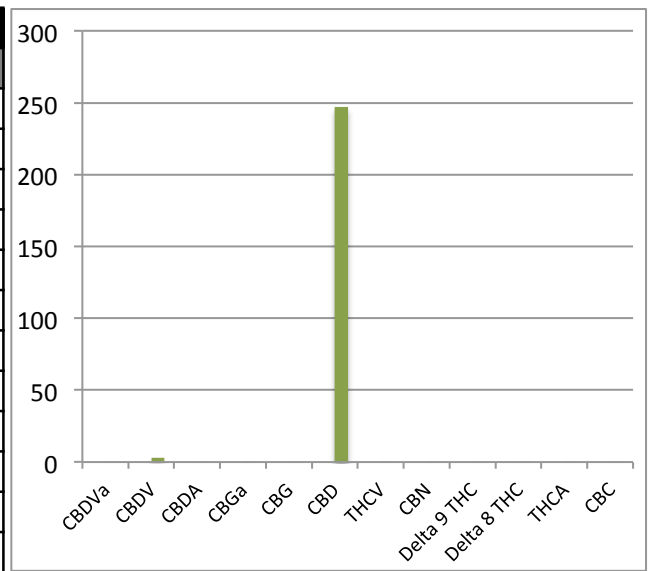
INSIDE YOUR PRODUCT WITH COMPLETE ACCURACY

## CERTIFICATE OF ANALYSIS

CUSTOMER DETAILS	
COMPANY NAME	Inari Health, c/o Mirage Distribution
COMPANY ADDRESS	Unit 18, 21 Wadsworth Road, Perivale UB6 7LQ
TEST TYPE	Combined Cannabinoids
PRODUCT NAME	2500mg Gold Leaf Peppermint MCT
SAMPLE SIZE	10ml

METHOD INFORMATION	
INSTRUMENT ID	PI-FC-10C17.01 (HPLC-UV)
SAMPLE TYPE	Final Product MCT
ID	PVOOI
SAMPLE BATCH	2304192500
COLUMN ID	PVC002
PV SAMPLE ID	SK0012-1
SAMPLE RECEIVED	23/04/19

RESULTS		
PARAMETER	% W/W	MG/G
CBDVa	0.001	0.01
CBDV	0.295	2.95
CBDA	0.001	0.01
CBGa	0.001	0.01
CBG	0.004	0.04
CBD	24.716	247.2
THCV	0.001	0.01
CBN	0.002	0.02
Delta 9 THC	0.001	0.01
Delta 8 THC	0.001	0.01
THCA	0.001	0.01
CBC	0.004	0.04



### FINAL PRODUCT STATEMENT

The one carrier oil is medium chain triglyceride (MCT) which has a specific gravity of 0.95, when combined with with all the ingredients this results in a CBD content of 260.10mg/ml

AUTHORISED BY	TITLE	DATE	SIGNED
Brett Heaps	Director	23/04/19	<i>BHeaps</i>

This batch has been tested by an external testing laboratory which is accredited in accordance with the recognised International Standard ISO/IEC 17025:2005. The reproduction in total or in part of this document is not allowed without the authorisation of Cannavision. The results are limited to the sample analysed and are not applicable to the entire batch.

